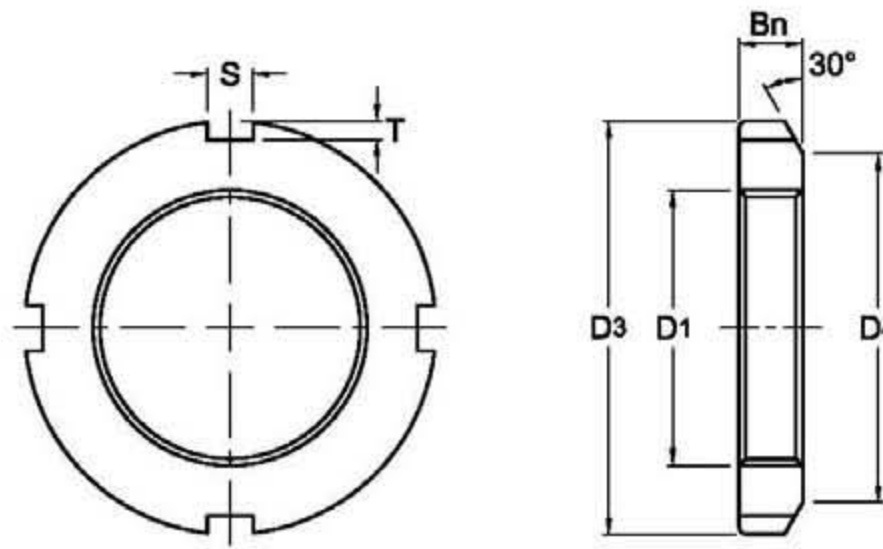




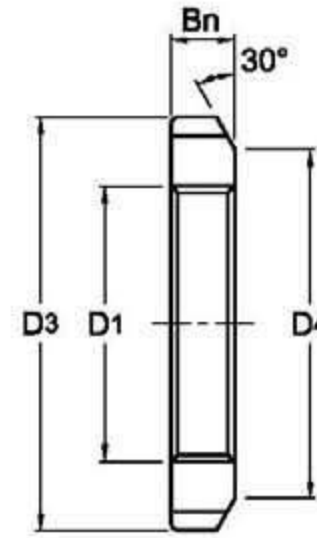
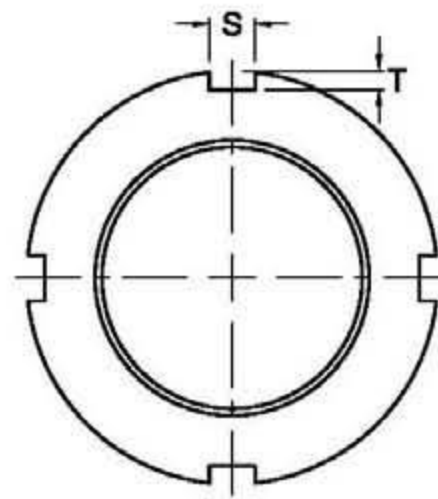
**Locknuts
AN
KM**



Lock Nut Part No.	D ₁ Thread	D ₃ mm	D ₄ mm	Bn mm	S mm	T mm	D ₆ mm	Lock Washer	Weight (kgs)
AN 00	M 10 x 0.75	18	13	4	3	2	10.5	AW 00	0.005
AN 01	M 12 x 1.0	22	17	4	3	2	12.5	AW 01	0.007
AN 02	M 15 x 1.0	25	21	5	4	2	15.5	AW 02	0.010
AN 03	M 17 x 1.0	28	24	5	4	2	17.5	AW 03	0.013
AN 04	M 20 x 1.0	32	26	6	4	2	20.5	AW 04	0.019
AN 05	M 25 x 1.5	38	32	7	5	2	25.8	AW 05	0.025
AN 06	M 30 x 1.5	45	38	7	5	2	30.8	AW 06	0.043
AN 07	M 35 x 1.5	52	44	8	5	2	35.8	AW 07	0.053
AN 08	M 40 x 1.5	58	50	9	6	2.5	40.8	AW 08	0.085
AN 09	M 45 x 1.5	65	56	10	6	2.5	45.8	AW 09	0.119
AN 10	M 50 x 1.5	70	61	11	6	2.5	50.8	AW 10	0.148
AN 11	M 55 x 2.0	75	67	11	7	3	56	AW 11	0.158
AN 12	M 60 x 2.0	80	73	11	7	3	61	AW 12	0.174
AN 13	M 65 x 2.0	85	79	12	7	3	66	AW 13	0.203
AN 14	M 70 x 2.0	92	85	12	8	3.5	71	AW 14	0.242
AN 15	M 75 x 2.0	98	90	13	8	3.5	76	AW 15	0.287
AN 16	M 80 x 2.0	105	95	15	8	3.5	81	AW 16	0.397
AN 17	M 85 x 2.0	110	102	16	8	3.5	86	AW 17	0.451
AN 18	M 90 x 2.0	120	108	16	10	4	91	AW 18	0.556
AN 19	M 95 x 2.0	125	113	17	10	4	96	AW 19	0.658
AN 20	M 100 x 2.0	130	120	18	10	4	101	AW 20	0.698
AN 21	M 105 x 2.0	140	126	18	12	5	106	AW 21	0.845
AN 22	M 110 x 2.0	145	133	19	12	5	111	AW 22	0.965
AN 23	M 115 x 2.0	150	137	19	12	5	116	AW 23	1.010
AN 24	M 120 x 2.0	155	138	20	12	5	126	AW 24	1.080
AN 25	M 125 x 2.0	160	148	21	12	5	126	AW 25	1.190
AN 26	M 130 x 2.0	165	149	21	12	5	131	AW 26	1.250
AN 27	M 135 x 2.0	175	160	22	14	6	136	AW 27	1.550
AN 28	M 140 x 2.0	180	160	22	14	6	141	AW 28	1.560



Locknuts
AN
KM



Lock Nut Part No.	D ₁ Thread	D ₃ mm	D ₄ mm	B _n mm	S mm	T mm	D ₆ mm	Lock Washer	Weight (kgs)
AN 29	M 145 x 2.0	190	171	27	27	6	146	AW 29	2.000
AN 30	M 150 x 2.0	195	171	29	29	6	151	AW 30	2.030
AN 31	M 155 x 3.0	200	182	31	31	7	156.5	AW 31	2.210
AN 32	M 160 x 3.0	210	182	32	32	7	161.5	AW 32	2.590
AN 33	M 165 x 3.0	210	193	35	35	7	166.5	AW 33	2.430
AN 34	M 170 x 3.0	220	193	36	36	7	171.5	AW 34	2.800
AN 36	M 180 x 3.0	230	203	37	37	8	181.5	AW 36	3.070
AN 38	M 190 x 3.0	240	214	38	38	8	191.5	AW 38	3.390
AN 40	M 200 x 3.0	250	226	39	39	8	201.5	AW 40	3.690

NOTE :

1) M means metric thread and the digits are major diameter of thread and pitch.

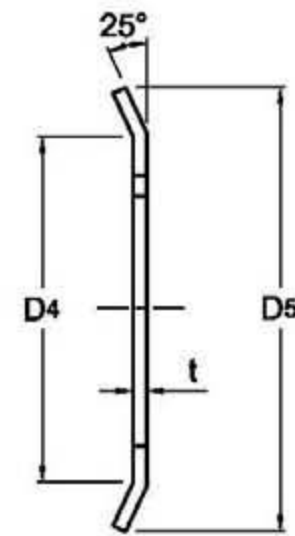
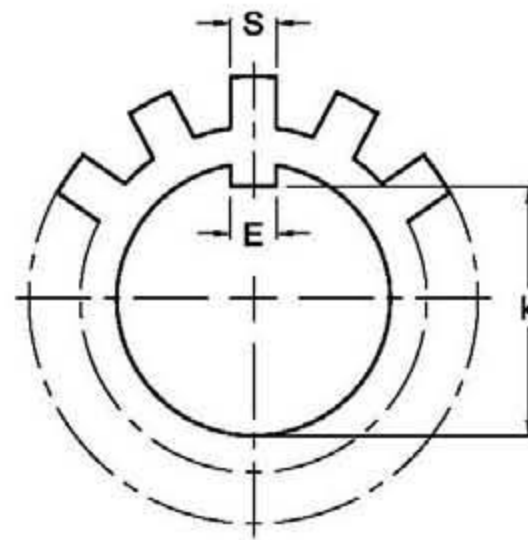
M代表公制螺紋；數字代表螺紋外徑及螺距。

2) The specifications of AN can be applied for KM.

AN的尺寸規格適用於KM。



**Lock Washers
AW
FLAT TAB**



Lock Washer ¹⁾ Part No.	D ₁ mm	k mm	E mm	t mm	S mm	D ₄ mm	D ₅ mm	Number of tongues	Lock nut No.	Weight per 100 pieces (kgs)
AW 00	10	8.5	3	1	3	13	21	9	AN 00	0.131
AW 01	12	10.5	3	1	3	17	25	9	AN 01	0.192
AW 02	15	13.5	4	1	4	21	28	13	AN 02	0.253
AW 03	17	15.5	4	1	4	24	32	13	AN 03	0.313
AW 04	20	18.5	4	1	4	26	36	13	AN 04	0.350
AW 05	25	23	5	1.2	5	32	42	13	AN 05	0.640
AW 06	30	27.5	5	1.2	5	38	49	13	AN 06	0.780
AW 07	35	32.5	6	1.2	5	44	57	15	AN 07	1.040
AW 08	40	37.5	6	1.2	6	50	62	15	AN 08	1.230
AW 09	45	42.5	6	1.2	6	56	69	17	AN 09	1.520
AW 10	50	47.5	6	1.2	6	61	74	17	AN 10	1.600
AW 11	55	52.5	8	1.5	7	67	81	17	AN 11	1.960
AW 12	60	57.5	8	1.5	7	73	86	17	AN 12	2.530
AW 13	65	62.5	8	1.5	7	79	92	19	AN 13	2.900
AW 14	70	66.5	8	1.5	8	85	98	19	AN 14	3.340
AW 15	75	71.5	8	1.5	8	90	104	19	AN 15	3.560
AW 16	80	76.5	10	1.8	8	95	112	19	AN 16	4.640
AW 17	85	81.5	10	1.8	8	102	119	19	AN 17	5.240
AW 18	90	86.5	10	1.8	10	108	126	19	AN 18	6.230
AW 19	95	91.5	10	1.8	10	113	133	19	AN 19	6.700
AW 20	100	96.5	12	1.8	10	120	142	19	AN 20	7.650
AW 21	105	100.5	12	1.8	12	126	145	19	AN 21	8.260
AW 22	110	105.5	12	1.8	12	133	154	19	AN 22	9.400
AW 23	115	110.5	12	2	12	137	159	19	AN 23	10.800
AW 24	120	115	14	2	14	138	164	19	AN 24	10.500
AW 25	125	120	14	2	14	148	170	19	AN 25	11.800
AW 26	130	125	14	2	14	149	175	19	AN 26	11.300
AW 27	135	130	14	2	14	160	185	19	AN 27	14.400
AW 28	140	135	16	2	16	160	192	19	AN 28	14.200
AW 29	145	140	16	2	16	171	202	19	AN 29	16.800
AW 30	150	145	16	2	16	171	205	19	AN 30	15.500
AW 31	155	147.5	16	2.5	16	182	212	19	AN 31	20.900
AW 32	160	154	18	2.5	18	182	217	19	AN 32	22.200
AW 33	165	157.5	18	2.5	16	193	222	19	AN 33	24.100
AW 34	170	164	18	2.5	16	193	232	19	AN 34	24.700
AW 36	180	174	20	2.5	18	203	242	19	AN 36	26.800
AW 38	190	184	20	2.5	18	214	252	19	AN 38	27.800
AW 40	200	194	20	2.5	18	226	262	19	AN 40	29.300
AW 44	220	213	24	3	20	250	292	19	AN 44	48.300
AW 48	240	233	24	3	20	270	312	19	AN 48	50.200
AW 52	260	253	28	3	24	300	342	23	AN 52	72.900
AW 56	280	273	28	3	24	320	362	23	AN 56	75.900

NOTE:

1) The specifications of AW can be applied for MB.

AW的尺寸規格適用於MB。